

# SPPI Testing and Clearance Guidance for Staff and Residents

The SPPI has prepared testing and clearance guidance for both staff and residents in the developmental services sector. Please see the attached flowcharts that are based on the latest guidance released from the Ministry of Health and Public Health Ontario as of June 16, 2020.

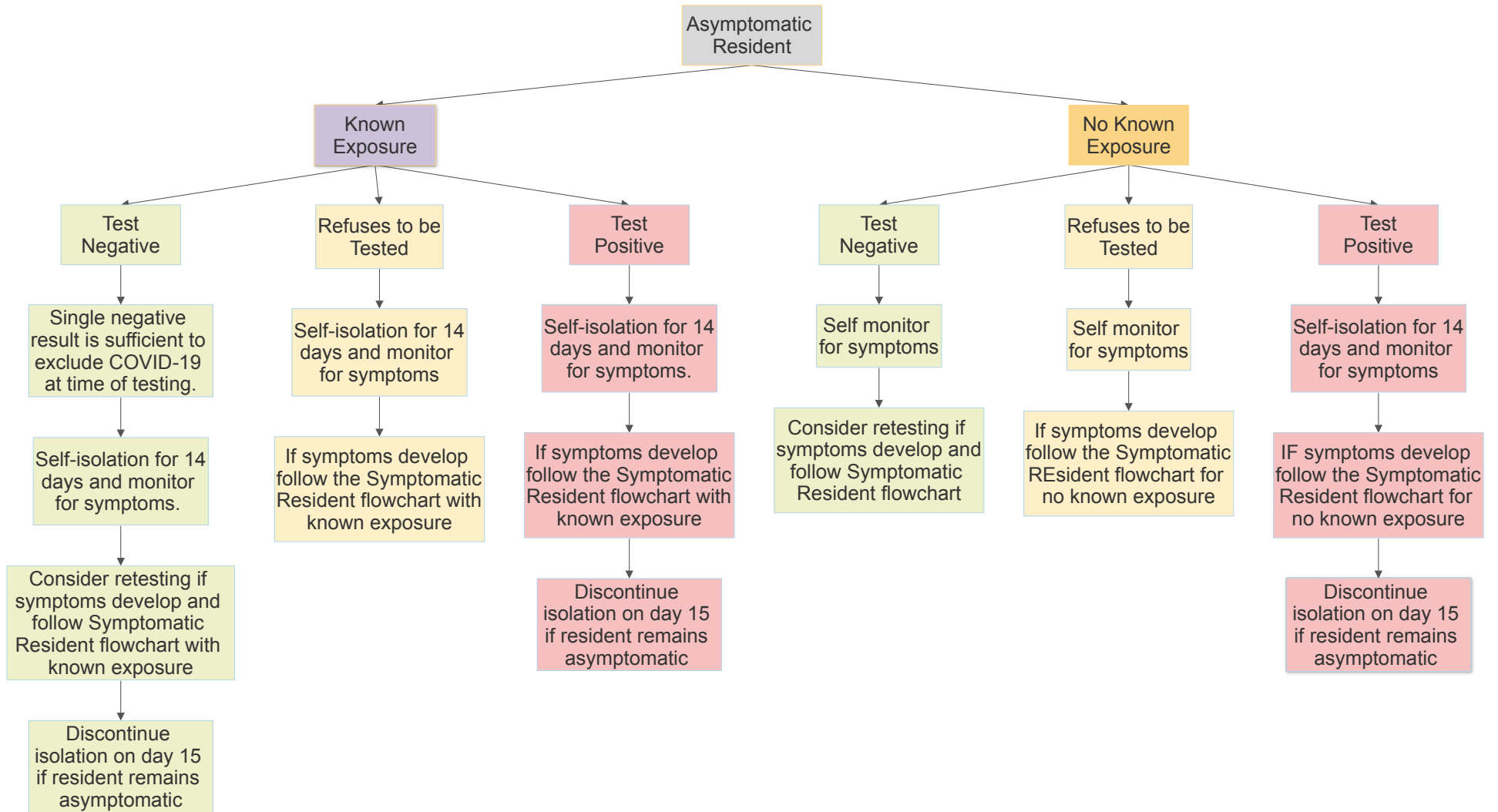
## Resources:

[http://www.health.gov.on.ca/en/pro/programs/publichealth/coronavirus/docs/2019\\_covid\\_testing\\_guidance.pdf](http://www.health.gov.on.ca/en/pro/programs/publichealth/coronavirus/docs/2019_covid_testing_guidance.pdf)

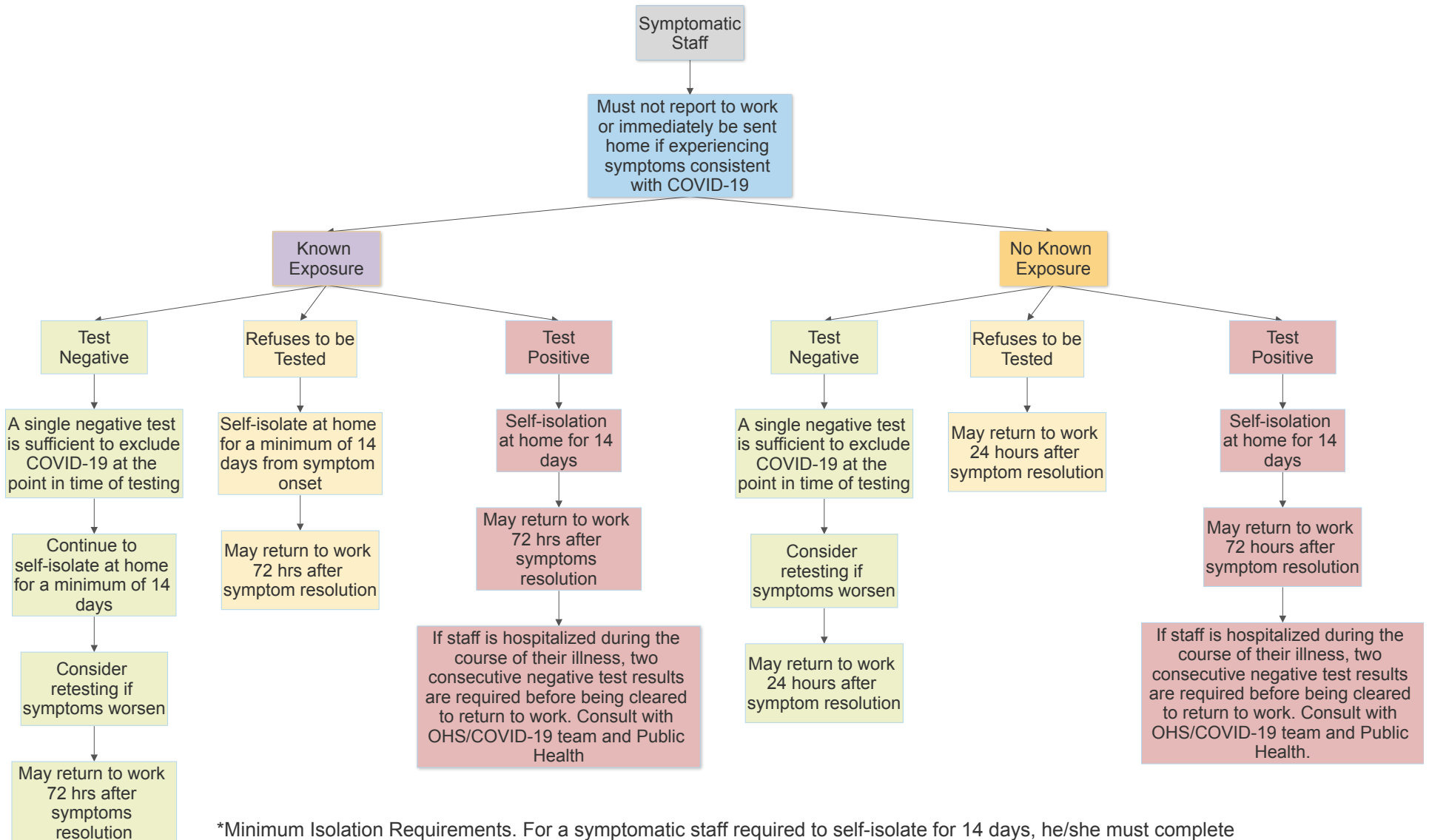
[http://www.health.gov.on.ca/en/pro/programs/publichealth/coronavirus/docs/2019\\_testing\\_clearing\\_cases\\_guidance.pdf](http://www.health.gov.on.ca/en/pro/programs/publichealth/coronavirus/docs/2019_testing_clearing_cases_guidance.pdf)

<https://www.publichealthontario.ca/-/media/documents/ncov/updated-ipac-measures-covid-19.pdf?la=en>

## SPPI Testing and Clearance Asymptomatic Resident

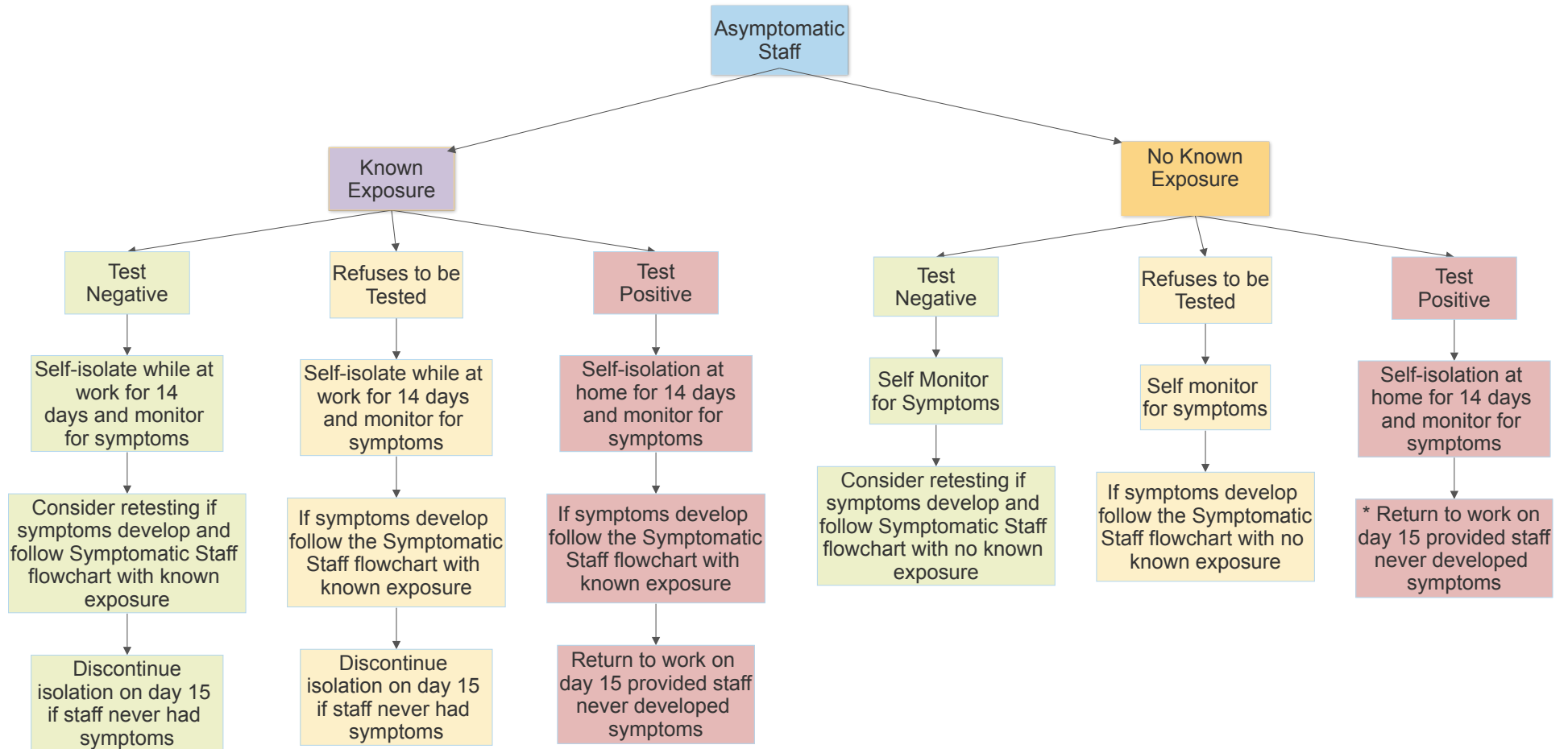


## SPPI Testing and Clearance Symptomatic Staff



\*Minimum Isolation Requirements. For a symptomatic staff required to self-isolate for 14 days, he/she must complete the 14 day period in isolation at a minimum. Then, if they have been symptom free for at least the last 72 hrs of the 14 day period, then on day 15 they could discontinue isolation restrictions. However, if they haven't been symptom free for at least the last 72 hours of the 14 day period, then they must continue isolation until they are at least 72 hours without symptoms.

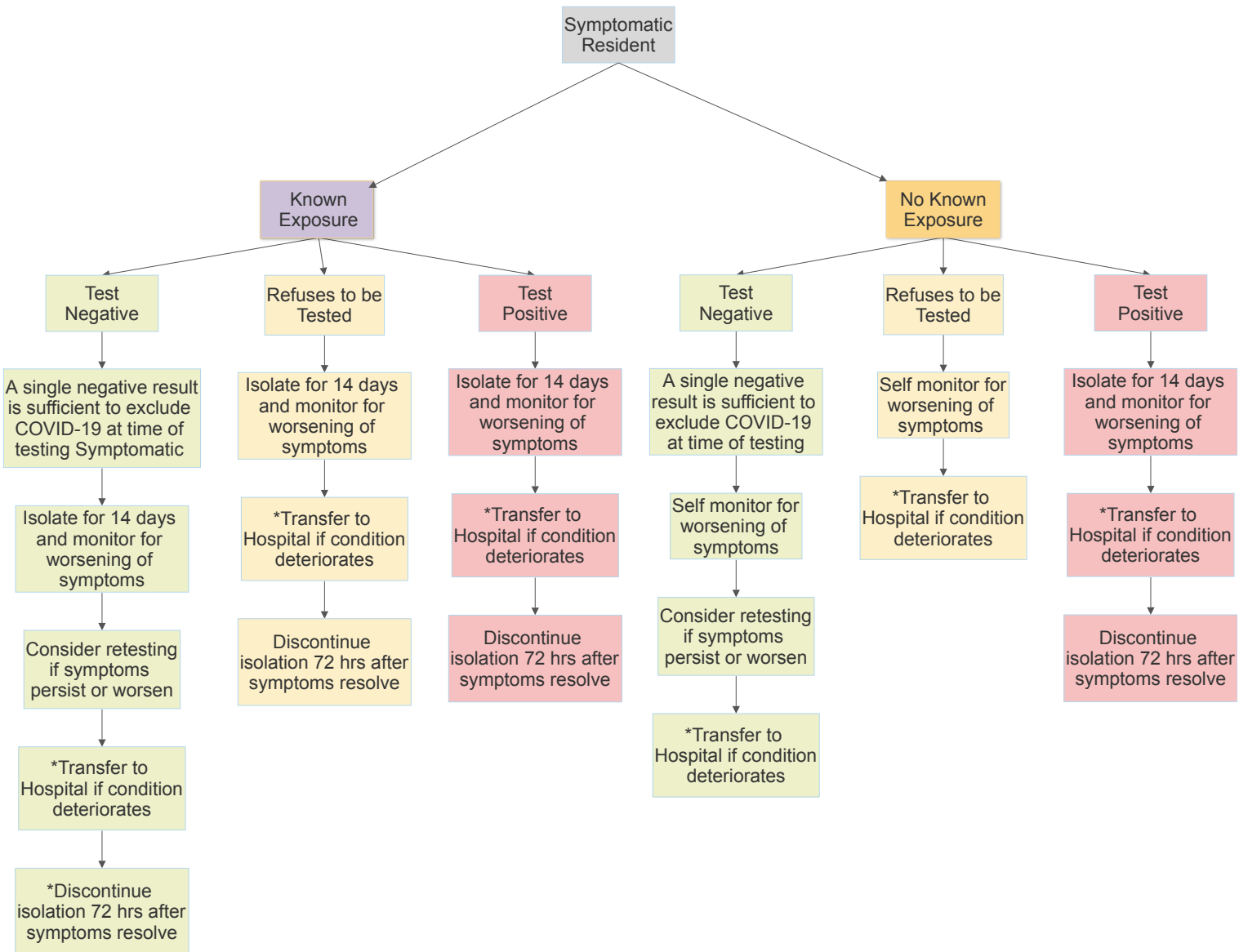
## SPPI Testing and Clearance Asymptomatic Staff



\*If there has been no known recent potential exposure (e.g. tested as part of surveillance) and no other cases detected in the location, there is no minimum time off from the positive specimen collection date as it is unclear when in the course of illness the positive result represents

(i.e. consistently asymptomatic staff can continue working in work self-isolation until 14 days from specimen collection date).  
Consideration for early return to work following a positive test result before completing the minimum 14 days isolation at home must be done in consultation with Occupational Health Safety.

# SPPI Testing and Clearance Symptomatic Resident



\*\*If resident is hospitalized, consult with Public Health to determine when to discontinue isolation and whether two consecutive negative specimens collected at least 24 hrs apart is required.

\*\*Minimum Isolation Requirements.

For a symptomatic resident required to self-isolate for 14 days, he/she must complete the 14 day period in isolation at a minimum. Then, if they have been symptom free for at least the last 72hrs of the 14 day period, then on day 15 they could discontinue isolation restrictions. However, if they haven't been symptom free for at least the last 72 hours of the 14 day period, then they must continue isolation until they are at least 72 hours without symptoms.